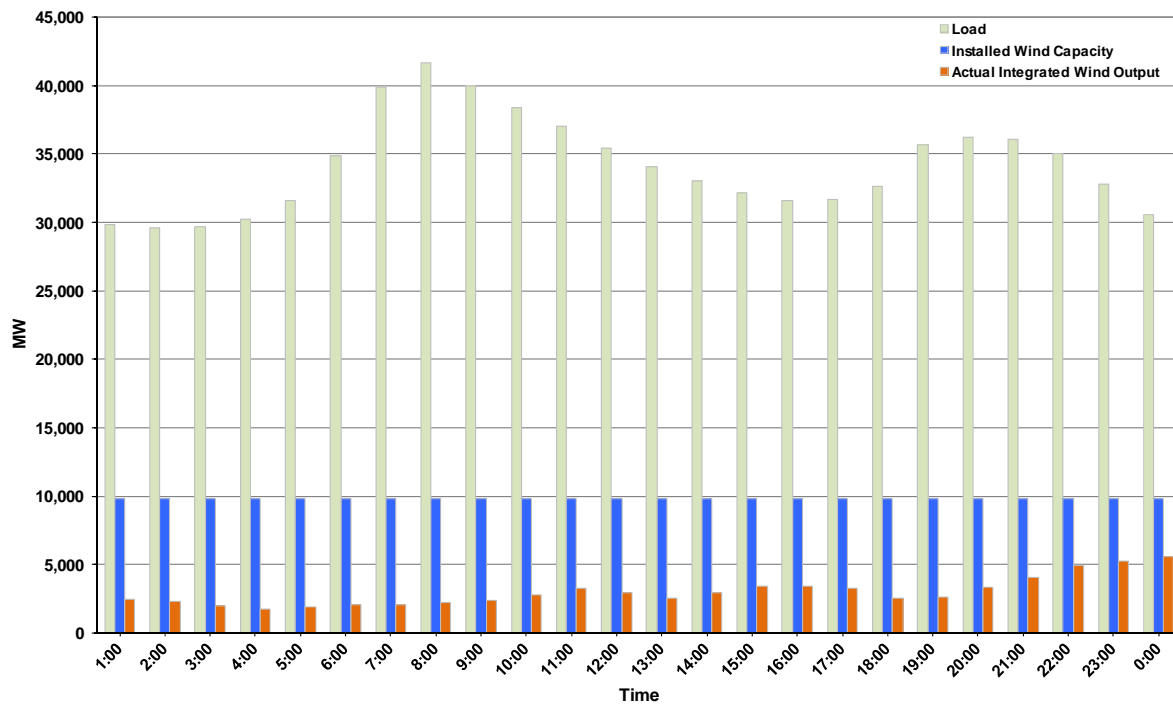




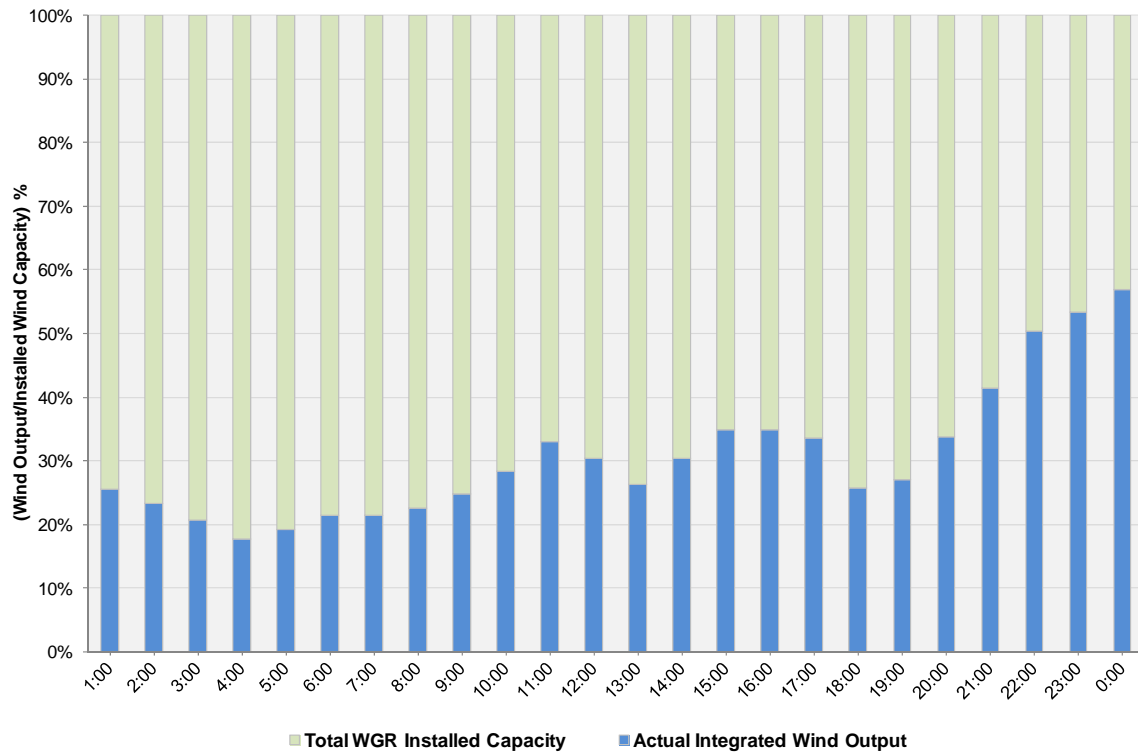
ERCOT Grid Operations Wind Integration Report: 01/18/12

Peak Load	41,644 MW
Load Peak Hour (HE)	08
Wind over Peak	2,218 MW
Wind Record 10/07/11	7,400 MW
Max Wind Value	5,914 MW
Wind Peak Time	23:35
Wind Integration %	19.43%

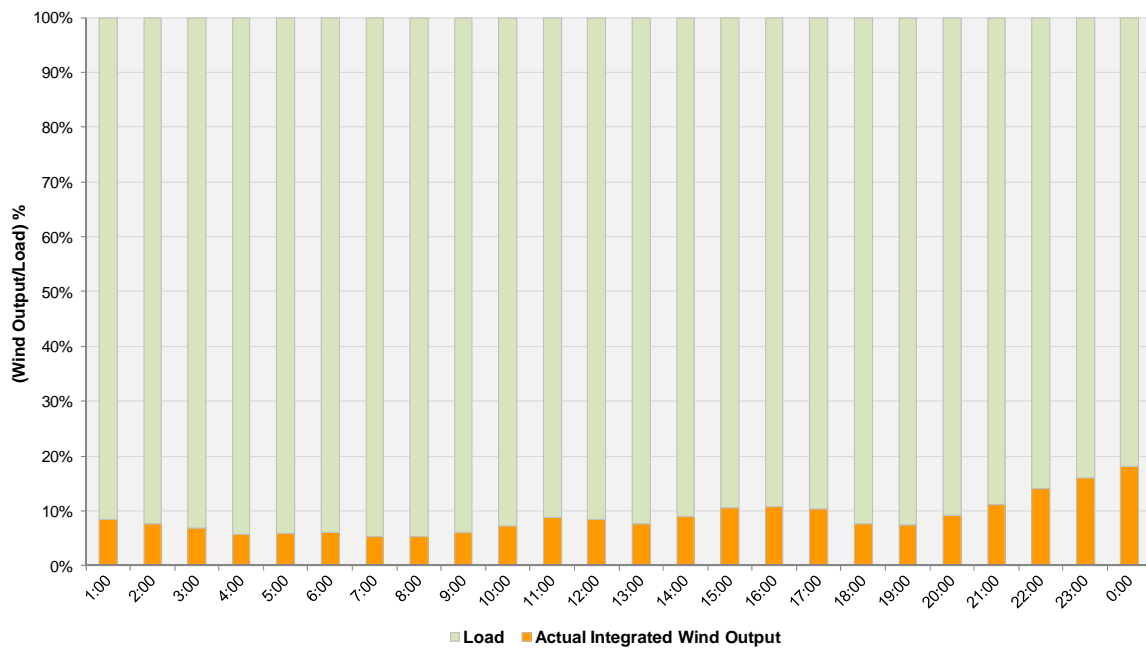
**Hourly Average Actual Load vs. Actual Wind Output
01-18-2012**



Actual Wind Output as a Percentage of the Total Installed Wind Capacity
01-18-2012



Actual Wind Output as a Percentage of the ERCOT Load
01-18-2012



ERCOT Load vs. Actual Wind Output 1/11/2012 - 1/18/2012

